

Il Cubatore

x

Quick Start Digital caliper

Congratulations

on your purchase of
Il Cubatore, the intelligent
log cubing system.

General use

Il Cubatore is used to digitally measure the volume of logs, with or without bark. Prior to measurement, basic batch data such as customer, wood type, quality and bark content (percentage, etc.) are entered into Il Cubatore application, then the diameter is measured log by log (also in two steps horizontally and vertically) with the digital caliper. Length and quality (or wood type) can be quickly modified with a swipe in Il Cubatore application. The application constantly displays the quantity and total volume with and without bark.

At the end, the measurement data can still be checked, modified or completed, printed with the portable printer or, if a mobile network is available, transferred to Il Cubatore cloud. Il Cubatore cloud is a website where data entered can be managed, measurement lists printed out and data exported to other applications. It is also possible to enter, modify or complete basic data such as customers, wood types, etc.

This Quick-Start manual explains how to perform your first measurement.

Scope of delivery

Digital caliper with laser

Smartphone with application and charger



Wrist holder for smartphone

„Cubatore“ Software

English Logout

Lots

ID	NAME	CUSTOMER	MEASURER	ORIGIN	SAWMILL	WOOD	DATE	TRUNKS	M³	M³	TAG
30279	54	Cora spa	Alex	Italy	P.J.Lumber	Spruce	2024-02-26	31	19,039	21,153	
30280	10000	Cora spa	Alex	German	P.J.Lumber	Oak	2024-02-26	14	25,139	25,139	
30281	12/bis	Florianinc spa	Daniel	German	P.J.Lumber	Spruce	2024-02-26	8	4,657	5,016	

NOTE

NUMBER	QUALITY	WOOD	TIME	LENGTH	REDUCTION	1 DIAMETER	2 DIAMETERS	3 DIAMETERS	4 DIAMETERS	M³	M³
1	A	Spruce	17.04.38	400 cm	10 %	34 cm	35 cm	34 cm	23 cm	0.272	0.302
2	A	Spruce	17.05.42	400 cm	10 %	33 cm	33 cm	0 cm	0 cm	0.308	0.342
8	A	Spruce	17.06.36	400 cm	10 %	23 cm	24 cm	0 cm	0 cm	0.149	0.166
9	A	Spruce	17.07.03	400 cm	10 %	56 cm	55 cm	0 cm	0 cm	0.855	0.95
10	A	Spruce	17.07.16	400 cm	10 %	65 cm	67 cm	0 cm	0 cm	1.231	1.368
11	A	Spruce	17.07.19	400 cm	10 %	33 cm	33 cm	0 cm	0 cm	0.308	0.342
12	A	Spruce without	17.07.21	400 cm	0 %	67 cm	67 cm	0 cm	0 cm	1.41	1.41
13	A	Spruce	17.07.39	400 cm	10 %	21 cm	22 cm	0 cm	0 cm	0.124	0.138

Export Print Batch update

Smartphone user guide



- 1 Adjust volume
- 2 Switching the smartphone on and off
- 3 Charging the battery

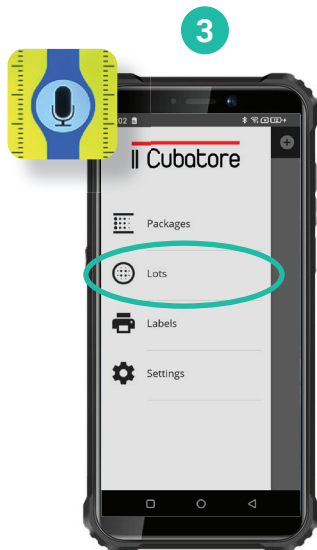
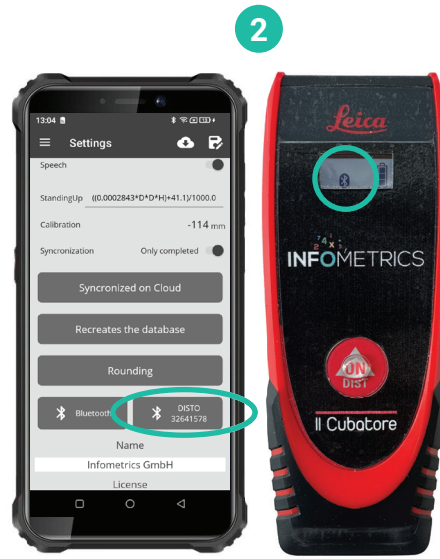
Caliper and laser operating instructions



- 1 Activate laser & confirm measurement
- 2 Deactivating the laser
- 3 Bluetooth connection and battery status
- 4 Batteries
- 5 Foldable
- 6 Adjustable



Step #1: Verify connection and create a new lot

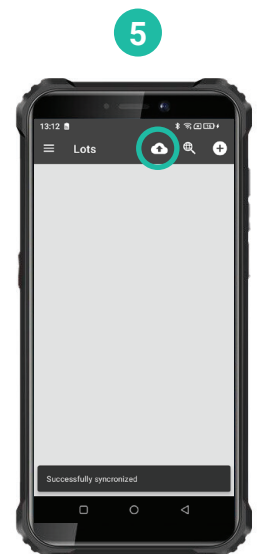
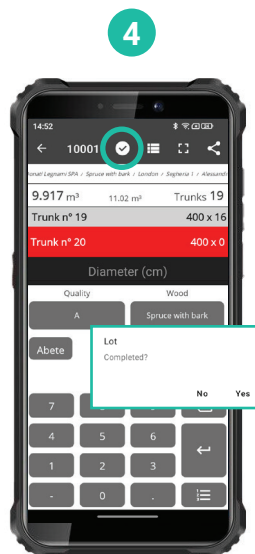
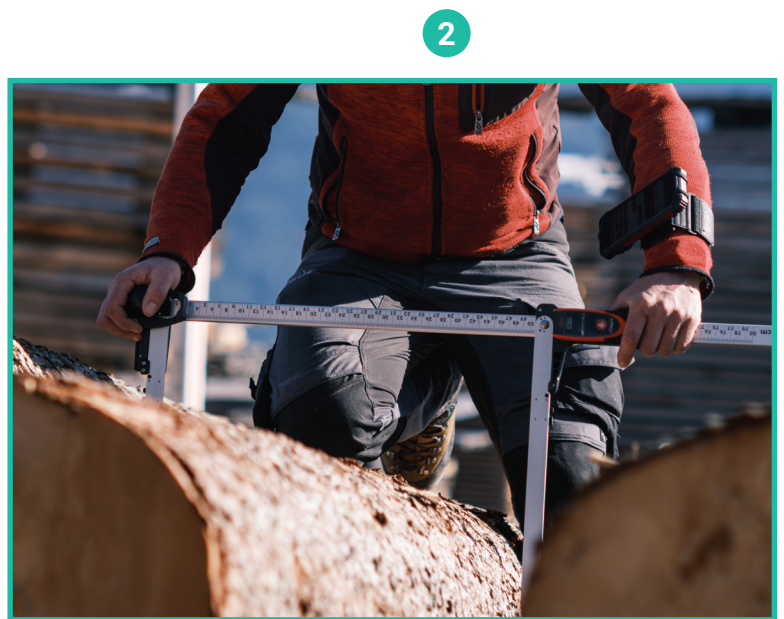
- 1 Switch on smartphone and digital caliper
- 2 Check Bluetooth connection between smartphone and caliper*
- 3 Open application > Menu > Lots
- 4 Create a new lot



* Connect Bluetooth manually if not connected. See „Questions and answers”

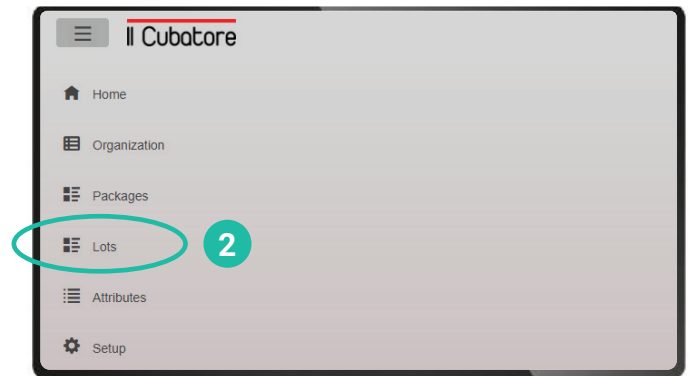
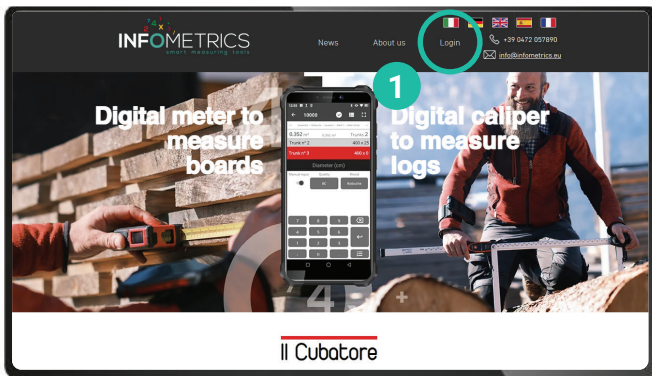
Step #2: Measure

- 1 Open the caliper
- 2 Measuring the log
- 3 Double-click on the laser to perform the measurement
- 4  Batch completion
- 5  Synchronize data with the cloud



Step #3: Cloud-Software

- 1 Log on to www.infometrics.eu
- 2 Menu > Lots
- 3 Batch detail view
- 4 Export to Excel
- 5 Print files



ID	NAME	CUSTOMER	MEASURER	ORIGIN	SAWMILL	WOOD	DATE
30279		Cora spa	Alex	Italy	P.J.Lumber	Spruce	2024-02-26
30280		Cora spa	Alex	German	P.J.Lumber	Oak	2024-02-26
30281	12/bis	Florianinc spa	Daniel	German	P.J.Lumber	Spruce	2024-02-26

NUMBER	QUALITY	WOOD	TIME	LENGTH	REDUCTION	1 DIAMETER	2 DIAMETERS	3 DIAMETER
1	A	Spruce	17:04:38	400 cm	10 %	34 cm	35 cm	34 cm
2	A	Spruce	17:05:42	400 cm	10 %	33 cm	33 cm	0 cm
8	A	Spruce	17:06:36	400 cm	10 %	23 cm	24 cm	0 cm
9	A	Spruce	17:07:03	400 cm	10 %	56 cm	55 cm	0 cm
10	A	Spruce	17:07:16	400 cm	10 %	65 cm	67 cm	0 cm
11	A	Spruce	17:07:19	400 cm	10 %	33 cm	33 cm	0 cm
12	A	Spruce without	17:07:21	400 cm	0 %	67 cm	67 cm	0 cm
13	A	Spruce	17:07:39	400 cm	10 %	21 cm	22 cm	0 cm

ID	NAME	CUSTOMER	MEASURER	ORIGIN	SAWMILL	WOOD	DATE
30279	64	Cora spa	Alex	Italy	P.J.Lumber	Spruce	2024-02-26	31	10,030	21,153
30280	10000	Cora spa	Alex	German	P.J.Lumber	Oak	2024-02-26	14	25,139	25,139
30281	12/bis	Florianinc...	Daniel	German	P.J.Lumber	Spruce	2024-02-26	8	4,657	5,018

Settings:

Format: XLS

Language: English

Bonus: 0 %

Diameter: 0 %

ID	NAME	CUSTOMER	MEASURER	ORIGIN	SAWMILL	WOOD	DATE
30280	10000	Cora spa	Alex	German	P.J.Lumber	Oak	2024-02-26	14	25,139	25,139
30281	12/bis	Florianinc...	Daniel	German	P.J.Lumber	Spruce	2024-02-26	8	4,657	5,018

Settings:

Format: Packing List

Layout: 1 column

Header:

Language: English


Bonus: 0 %

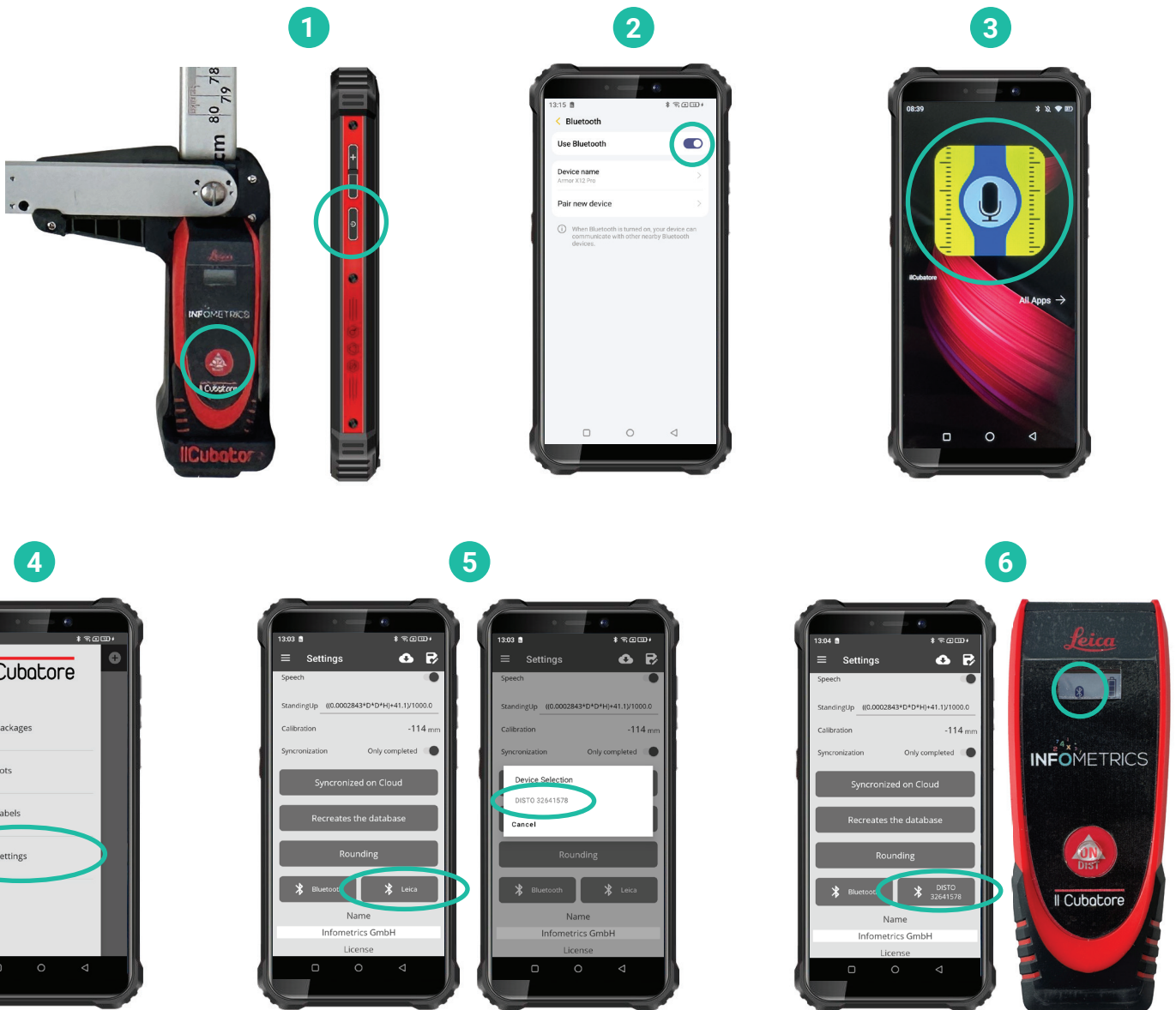
Diameter: 0 %

To export a batch, print it, modify it, delete it, etc., check the box on the right.

Questions and answers

Bluetooth connection caliper > smartphone/application

- 1 Activate laser/caliper and smartphone
- 2 Activate/check Bluetooth on your smartphone
- 3 Launch the application on your smartphone
- 4 Application > Menu > Settings
- 5 Connect caliper and application via Bluetooth
- 6  Check connection



Il Cubatore









www.infometrics.eu

+39 0472 057890